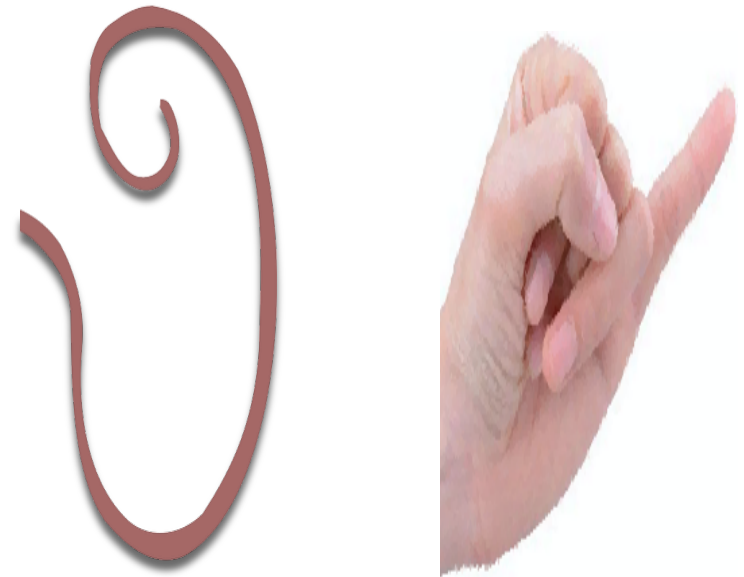


**Directions:** Cut out the signs below. Sort each picture based on the target sound's placement as *Beginning* versus *Ending*.



**Beginning**



**Ending**

**Directions:** Cut out pictures below. Sort each picture based on the target sound's placement in a word by placing them next to the *Beginning* or *Ending* sign.

<b>Ff</b>			
<b>Beginning "f" words: feather, fence, fire, foot</b>		<b>Ending "f" words: leaf, roof, surf, wolf</b>	
